

INTUITIVE

# Da Vinci Energy Portfolio

Powerful performance,  
intelligently delivered



# Da Vinci energy

Maximize efficiency without sacrificing results with the precision and versatility offered by Intuitive da Vinci energy products.

Start with the first complete high-frequency generator designed for robotic surgery. Pair it with advanced instruments that enable rapid sealing<sup>1</sup> while keeping temperatures low.<sup>2</sup> Or choose from a selection of monopolar and bipolar instruments finely tuned for excellent energy delivery. All seamlessly integrated to enable controlled energy delivery and optimized performance.

With Intuitive da Vinci energy, you can take charge of energy that's quicker,<sup>3</sup> and effective in more ways than one.

1. Average sealing time of less than 3 seconds using Vessel Sealer Extend Vessel Sealer Curved or SynchroSeal with the E-200 generator. Data on file at Intuitive.

2. Based on activation times and cool down temperatures: SynchroSeal with E-200 is compared to Harmonic ACE+7, VSE with E-200 is compared to VSE with ERBE VIO dV. Data on file at Intuitive.

3. Compared to Vessel Sealer Extend on ERBE VIO dV. Data on file at Intuitive.

15  
mmHg

Flow Rate  
L/min

5

20

40

2  
L/min

Set Pressure  
mmHg

15

## Energy



Hysterectomies

		30 W COAG Low with Autostop	Arm 2 Fenestrated Bipolar Forceps
		30 W COAG Low with Autostop	Bipolar
30 W Pure CUT	30 W Fulgurate COAG	Arm 1 Monopolar Curved Scissors	
30 W Pure CUT	30 W Fulgurate COAG	Monopolar	

## Vision

Arm 2  
30° Endoscope

Illumination



Orientation

30°



## Tower Display

Source

Console 1: S...

Eye

L

R

LASER

# Vessel Sealer Curved

## Precise performance

Work delicately in small or tight spaces. Vessel Sealer Curved enables you to operate around critical structures with precision and control. Finely dissect, precisely grasp, and securely seal and cut vessels—with a new sealing indication for use on lymphatic vessels.

---

### 01

A narrow tip allows you to finely dissect around critical structures and precisely grasp thin, delicate tissue.

---

### 02

A slim, curved jaw helps you follow natural anatomical curves.

---

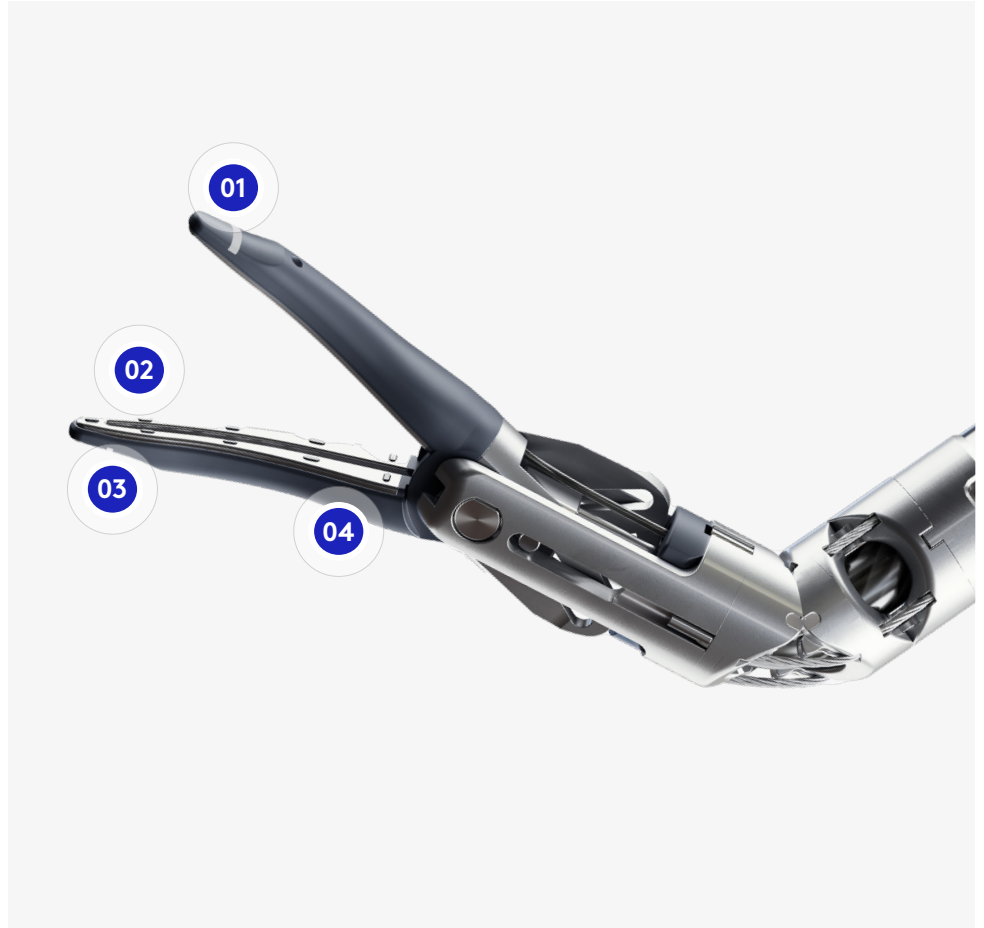
### 03

Reliably cut closer to the tip using a mechanical blade.<sup>1</sup>

---

### 04

Seal lymphatic vessels, as well as veins and arteries up to 7 mm in diameter and tissue bundles that fit in the jaws.



1. Compared to Vessel Sealer Extend. Data on file at Intuitive.

# Vessel Sealer Extend

## Performance you expect

Securely seal and cut vessels up to 7 mm in diameter and tissue bundles that fit in the jaws.<sup>1</sup> With an average sealing time of fewer than three seconds,<sup>1</sup> Vessel Sealer Extend may potentially improve efficiency during your surgical case.<sup>2</sup>

---

### 01

Optimize dissection and tissue manipulation with a straight jaw profile.

---

### 02

Independent seal and cold cut capabilities.

---

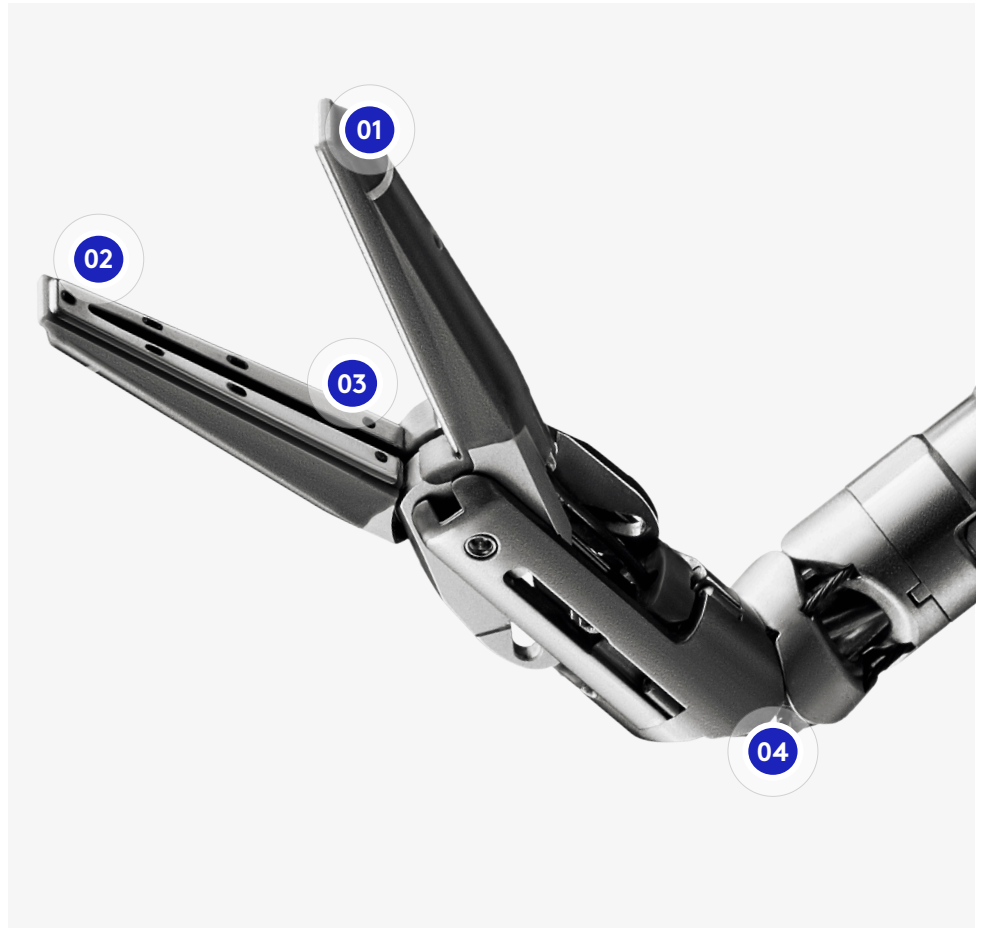
### 03

Strong grip provided by a textured surface.

---

### 04

Fully wristed with 60° of articulation.



1. When paired with E-200. Data on file at Intuitive.

2. Compared to Vessel Sealer Extend with ERBE VIO dV in terms of seal activation times.

# SynchroSeal

## Streamlined sealing

Get enhanced efficiency<sup>1</sup> and versatility<sup>2</sup> from a single instrument with an average seal time of fewer than two seconds.<sup>3</sup> With a single pedal press, SynchroSeal enables you to confidently seal and cut vessels up to 5 mm in diameter and tissue bundles that fit in the jaws.<sup>4</sup>

### 01

Achieve single-step transection with a raised cut electrode.

### 02

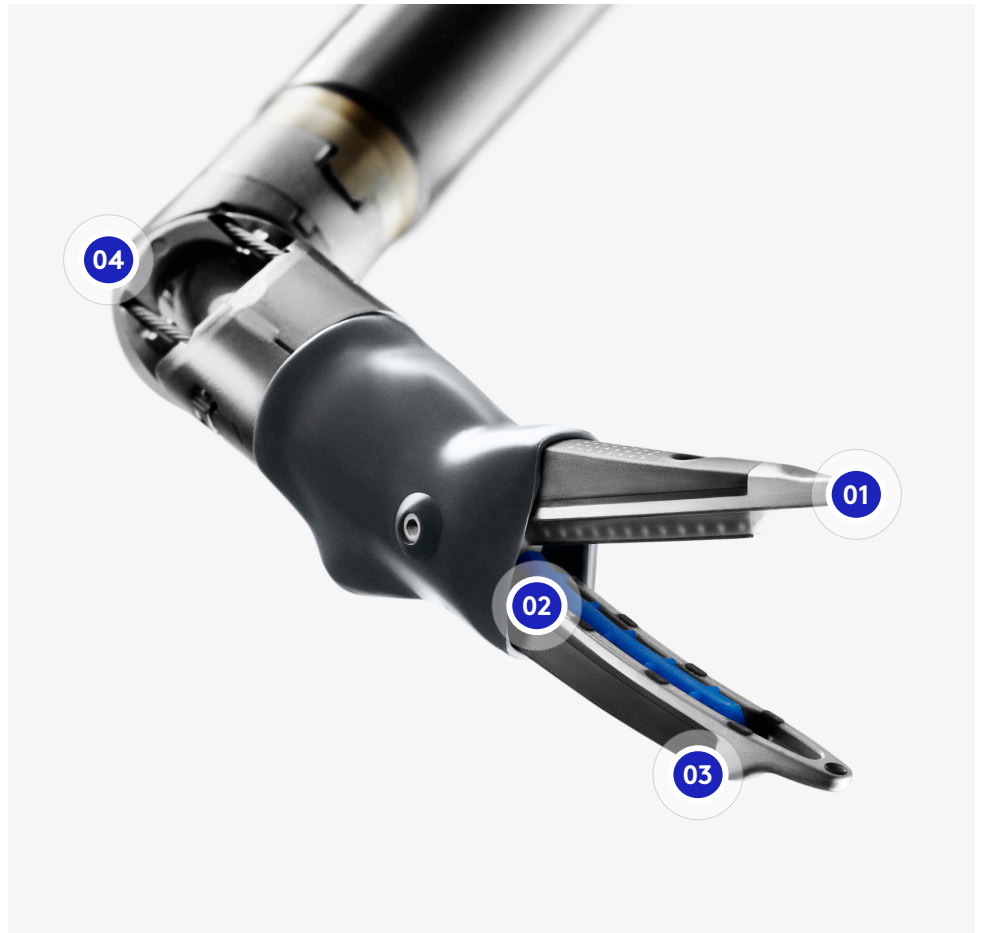
Use the refined, curved jaw for enhanced dissection<sup>5</sup> and secure grasping.<sup>6</sup>

### 03

Create strong, reliable seals.

### 04

Approach anatomy at your preferred angle with 60° fully wristed articulation.<sup>4</sup>



1. Compared to Vessel Sealer Extend with ERBE VIO dV in terms of faster estimated workflow and seal activation times.
2. Compared to Vessel Sealer Extend with ERBE VIO dV. Data on file at Intuitive.
3. Mean seal cycle time based on seal time from seal and sync mode.
4. Data on file at Intuitive.
5. Compared to Vessel Sealer Extend. Data on file at Intuitive.

6. Compared to HARMONIC ACE+7. Results of testing on file. Benchtop testing performed using uniform synthetic material. Forces at which the material slipped from the grasped jaws of SynchroSeal and HARMONIC ACE+7 were measured. Slip forces for SynchroSeal were significantly greater than HARMONIC ACE+7. Data on file at Intuitive.

# The da Vinci E-200 generator

Singularly versatile. Seamlessly integrated.

Complete robotic cases from first incision to closure using a single generator. The da Vinci E-200 generator is finely tuned for excellent energy delivery. It seamlessly integrates into an existing robotic surgical workflow to deliver high-frequency energy for cutting and coagulation, while enabling rapid sealing times<sup>1</sup> at low temperatures.<sup>2</sup>

---

Use monopolar, bipolar, and advanced energy instruments with fast vessel sealing.<sup>3</sup>

---

Use watt-based energy delivery commonly used in other generators on the market.

---

Adjust energy settings for each individual energy port.

---

Save up to three preferred energy settings to quickly switch in the middle of or between cases.

---

E-200 easily integrates with da Vinci surgical systems and cloud login profiles.

---

E-200 gives you the option to work with third-party lap and open energy instruments.\*

\* Da Vinci monopolar and bipolar adapters are available for purchase if needed.



1. Compared to ERBE VIO dV.
2. Vessel Sealer Extend with E-200 compared to Vessel Sealer Extend with ERBE VIO dV.
3. Average sealing time of less than three seconds using Vessel Sealer Extend, Vessel

Sealer Curved, or SynchroSeal with the E-200 generator. Data on file at Intuitive.

## 6 monopolar modes, 4 bipolar modes, and 3 advanced energy modes

Monopolar Cut (0–120 W)	Monopolar Coagulation (0–120 W)	Bipolar Energy (0–95 W)	Advanced Bipolar (automatically determined)
Pure	Precise	Low with Auto Stop	Coagulation
Blend	Fulgurate	Low	Sealing
	Spray	Standard	Sync <sup>1</sup>
	Low	Macro	

## Advancing energy performance for increased efficiency

Feature	Erbe VIO dV	E-100	E-200
Industry standard energy settings (watts)			X
Complete generator: monopolar, bipolar, and advanced energy	X		X
Fast vessel sealing <sup>2</sup>		X	X
Monopolar Precise mode			X
Additional bipolar modes			X
Energy presets	X		X
Individual energy settings for each energy port			X
Energy settings optimized with da Vinci instruments		X	X
Laparoscopic instrument compatibility (monopolar and bipolar)	X		X
Power delivery for monopolar and bipolar modes	Adaptive	NA	Constant

1. For SynchroSeal only.
2. Average sealing time of less than three seconds using Vessel Sealer Curved, Vessel Sealer Extend, or SynchroSeal with

the E-200 generator. Data on file at Intuitive.

## E-200 enables fast and secure vessel sealing:

- Fast vessel sealing (<3 seconds per seal)
- Secure seals (>3x systolic burst pressure)

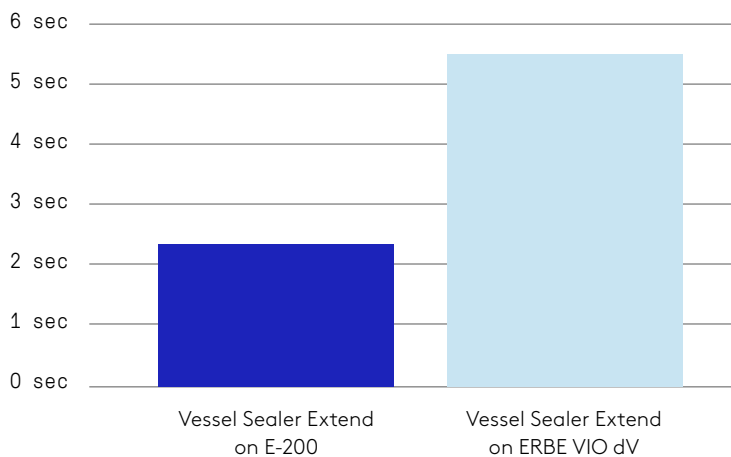
## With minimal thermal spread:

- Low thermal spread
- Low jaw temperatures

### Maximize efficiency

With the E-200 generator, Vessel Sealer Extend can seal twice as fast compared to Vessel Sealer Extend with the ERBE VIO dV generator.<sup>1</sup> All compatible vessel sealers can seal less than 3 seconds.<sup>2</sup>

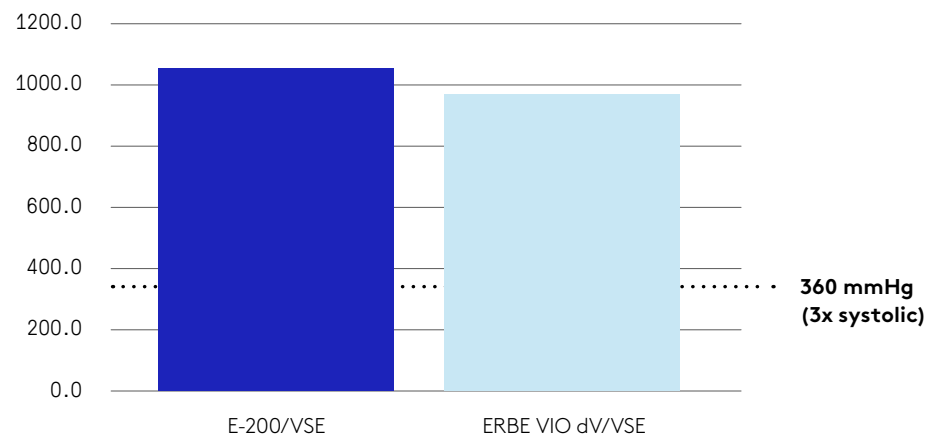
### Average seal time



### Continue creating strong, secure seals

When using E-200 paired with vessel sealers, you can rely on strong seals<sup>1</sup> that can withstand more than three times the normal systolic burst pressure.

### Mean arterial burst pressure (mmHg)



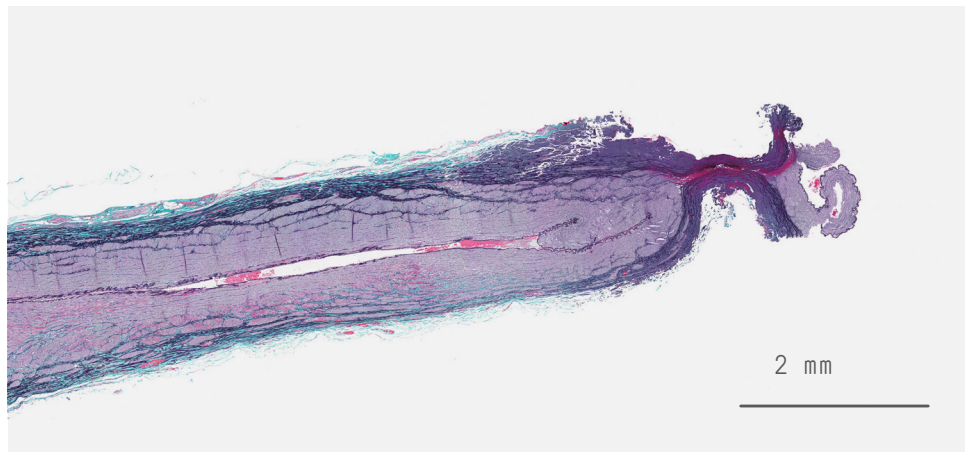
1. Data on file at Intuitive.

2. Average sealing time of less than three seconds using Vessel Sealer Curved, Vessel Sealer Extend, or SynchroSeal with the E-200 generator.

## The da Vinci E-200 generator

### Minimize lateral thermal spread

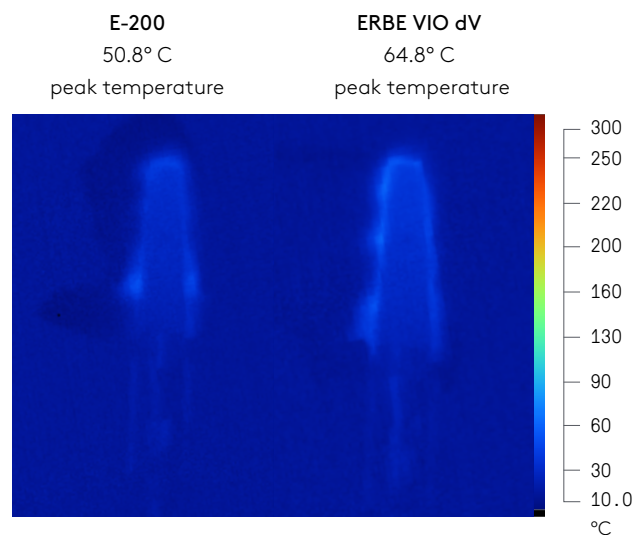
Seal vessels with 1-2 mm of lateral thermal spread with a compatible vessel sealer.<sup>1</sup>



The in vivo porcine artery pictured above has been sealed and transected with VSE connected to E-200.

### Keep your temperatures even lower

The E-200 generator enables vessel sealing at a cooler jaw temperature than with ERBE VIO dV, to help you move on to the next task.<sup>2</sup>



1. Low lateral thermal spread for Vessel Sealer Extend, Vessel Sealer Curved and SynchroSeal. Data on file at Intuitive.
2. Comparison using Vessel Sealer Extend. Data on file at Intuitive.

# Optimize your da Vinci energy skills

Intuitive's unified ecosystem can help.

We offer a comprehensive, unified ecosystem of systems, learning, services, and digital insights that helps you advance what's possible in minimally invasive care.

Take advantage of key learning products and services that teach and train you how to use da Vinci energy for specific procedures, and integrated digital intelligence that provides data-driven insights to help you automate and optimize your energy use.

## SimNow simulation

Use advanced, monopolar, and bipolar energy in realistic simulations on the da Vinci surgeon console in a consequence-free environment, using a library of procedure exercises.

Scan the QR code to see the available SimNow proficiency and procedure-specific energy exercises.



## Advanced Tissue Models

Practice using da Vinci energy on standardized, sustainable tissue models that bring the training to you without the need for specialized facilities or equipment.



---

### Technology training

Build da Vinci energy proficiency in specific procedures through progressive, surgeon-led training series.



---

### Telepresence

Collaborate and learn from other surgeons about energy use during procedures.



---

### Case Insights

Gain insights by tracking your da Vinci energy instrument usage from training, simulation, and live cases. Uncover instrument choreography trends using organized and actionable data to help you set progressive training or efficiency goals.



---






### Cloud login

Access your saved energy presets from any da Vinci system using the login credentials you use at the surgeon console, then access your My Intuitive data immediately after completing your procedure, whether you're on your phone or at your desktop.



---

# Instruments and accessories

		Part Number
	<b>E-200 generator upgrade</b>	<b>380229</b>
	<b>E-200 generator backup</b>	<b>378897</b>
	<b>Vessel Sealer Extend</b>	<b>480422</b>
	<b>SynchroSeal</b>	<b>480440</b>
	<b>Vessel Sealer Curved</b>	<b>480522</b>

---

**Instruments and accessories**  
**8 mm instruments**

---

**EndoWrist monopolar cautery instruments**

Part Number



**Monopolar curved scissors (Hot shears)**

**470179**

**Tip cover accessory**  
(Shown here)

**400180**



**Permanent cautery hook**

**470183**



**Permanent cautery spatula**

**470184**

Instruments and accessories  
8 mm instruments

EndoWrist bipolar cautery instruments

Part Number



Micro bipolar forceps

471171



Maryland bipolar forceps

471172



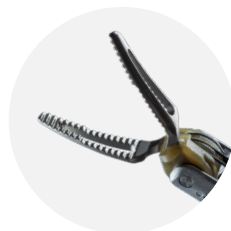
Fenestrated bipolar forceps

471205



Curved bipolar dissector

471344



Long bipolar grasper

471400

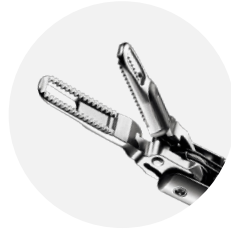
---

**Instruments and accessories**  
**8 mm instruments**

---

**EndoWrist bipolar cautery instruments**

Part Number



**Force Bipolar**

**471405**



**Force Feedback fenestrated  
bipolar forceps**

**471172**



**Force Feedback Maryland  
bipolar forceps**

**476172**

**To learn more about da Vinci  
energy products, visit:**

[www.intuitive.com/en-us/products-  
and-services/da-vinci/energy](http://www.intuitive.com/en-us/products-and-services/da-vinci/energy)

**To contact a representative or  
receive additional information:**

[www.intuitive.com](http://www.intuitive.com)

**U.S.**

1.877.408.3872

---

**Important safety information**

For product intended use and/or indications for use, risks, cautions, and warnings and full prescribing information, refer to the associated user manual(s) or visit <https://manuals.intuitivesurgical.com/market>.

For summary of the risks associated with surgery refer to [www.intuitive.com/safety](http://www.intuitive.com/safety).

**Da Vinci SimNow**

Da Vinci SimNow is intended to augment, not replace, existing training programs for the da Vinci surgical systems.

© 2020-2026 Intuitive Surgical, Inc. All rights reserved. Product and brand names/logos are trademarks or registered trademarks of Intuitive Surgical or their respective owner.

