



INTUITIVE

# Da Vinci SP

Move surgery forward. Again.

## Move surgery forward. Again.

Introducing Intuitive's da Vinci SP®, a versatile\* and high-performance single-port robotic surgical system.

Da Vinci SP gives you the ability to deliver robotic-assisted surgery through one single incision—potentially opening the door to the next era of surgical innovation.

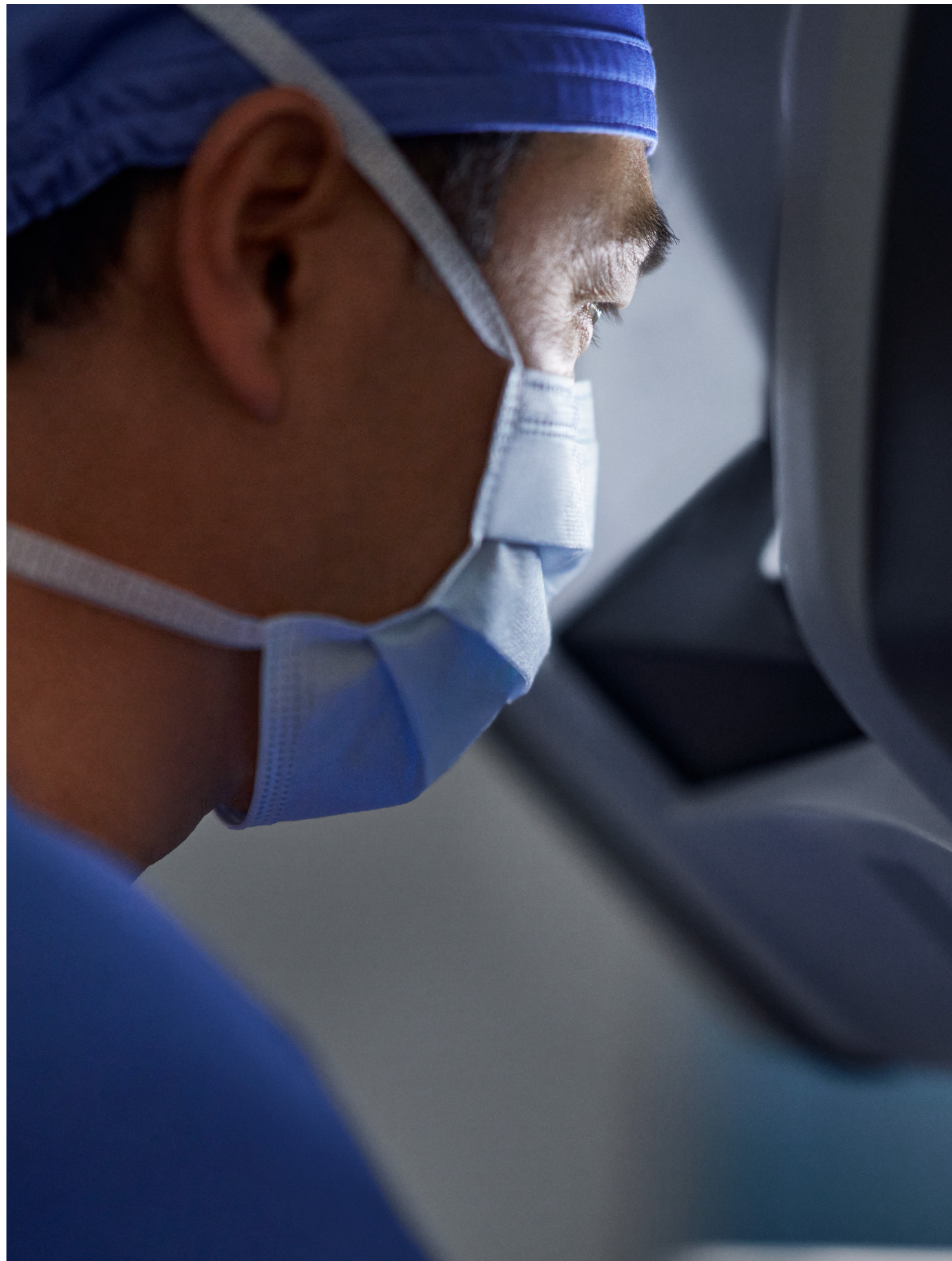
The system's unique patient cart design, instruments optimized for single-port surgery, and advanced vision can help empower you to perform procedures with a range of complexity.

Since the entry of SP into operating rooms in 2018, an emerging body of evidence shows that surgeons are harnessing its unique attributes to move surgery forward, again.

\* Indicated for urological and TORS procedures.







---

“My ultimate goal for single-port surgery was to make smaller, fewer incisions and to minimize the impact on patient outcomes.

When I saw Intuitive’s da Vinci SP, I thought, ‘This is the holy grail for single-port surgery.’ The technology, maneuverability, flexibility—everything is there.”

**Moses Kim, MD, PhD**

President of Orange County Urology Associates  
Chair of Urology at Hoag Memorial Hospital

The surgeon quote presented in this brochure represent the views and opinions of independent surgeons based on his or her practice and personal experience performing surgery with the da Vinci SP surgical system. The results may or may not be reproducible and are not generalizable.



## Discover the versatility

The da Vinci SP system empowers you to perform surgical procedures with a range of complexity.



## Empowering surgeons

Explore the types of surgery you can perform with da Vinci SP.

01

### Narrow access surgery

Operate in a narrow surgical workspace through a single incision or natural orifice (Transoral otolaryngology).

02

### Extraction site surgery

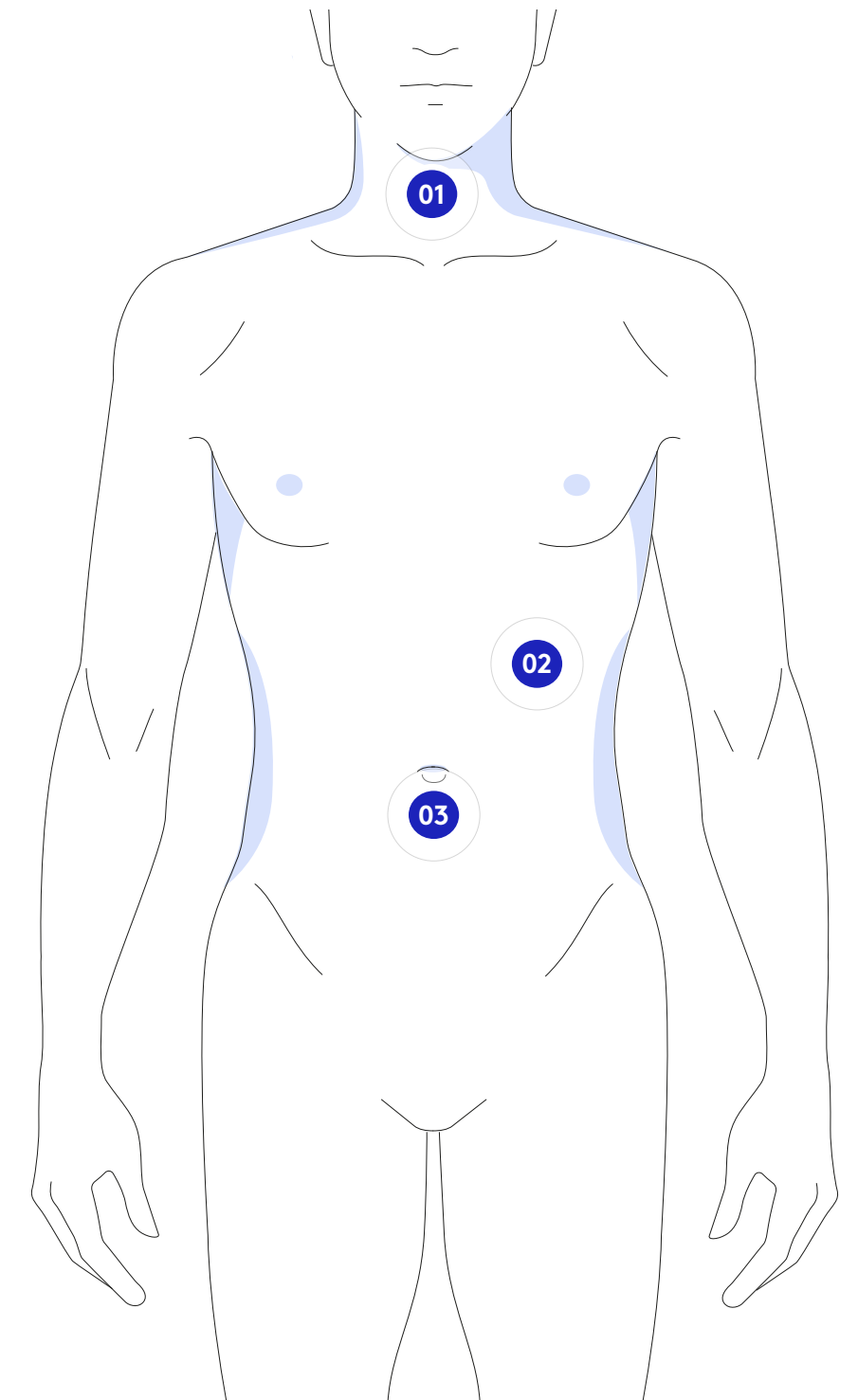
Perform the entire procedure through the specimen extraction site (Partial nephrectomy\*).

03

### Alternative access surgery

Operate through a strategically placed surgical access point (Prostatectomy with extraperitoneal access).

\* Requires a da Vinci SP Access Port



# A newly imagined patient cart\*

Enables surgeons with 360° of anatomical access

## One port placement

Reach anatomy in all four quadrants of the abdomen without redocking.

## No external collisions

Da Vinci SP's unique patient cart design eliminates external arm collisions.



\* Compared to multiport da Vinci surgical systems.





## See above, below\*, and around anatomy

Visualize tissue planes, identify structures, and stay oriented in the surgical field.

Reposition the fully articulating da Vinci SP endoscope independently from your instruments.

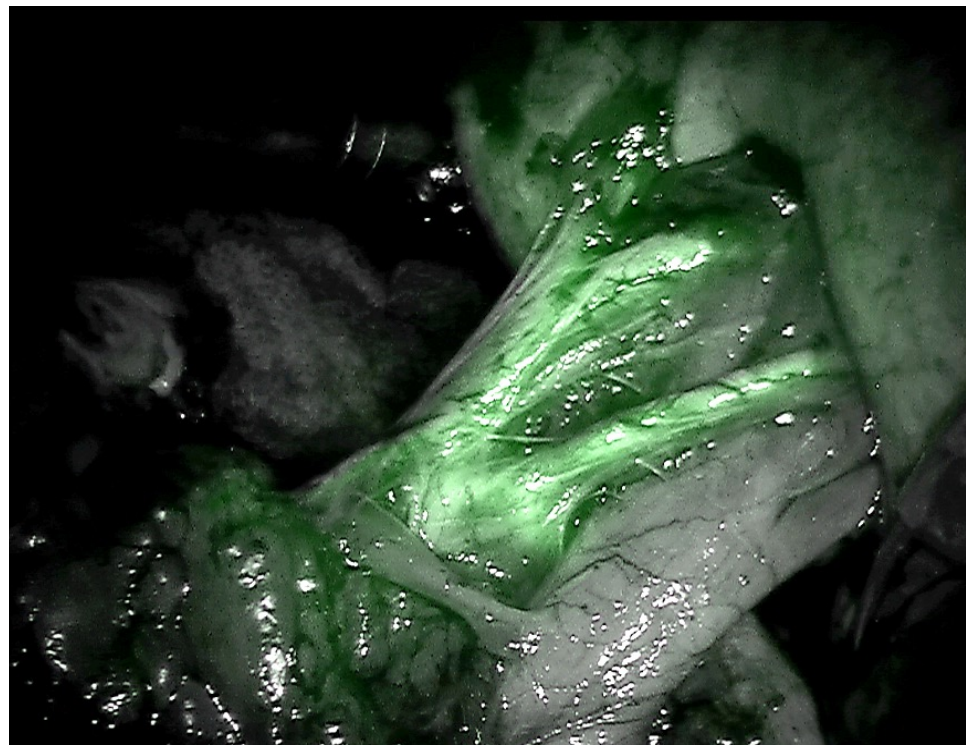


30° down

0°

30° up

Switch your view to Firefly® fluorescence imaging for real-time visualization of blood flow and tissue perfusion.



Firefly

\* Camera Above/Below function flips the camera 180°.

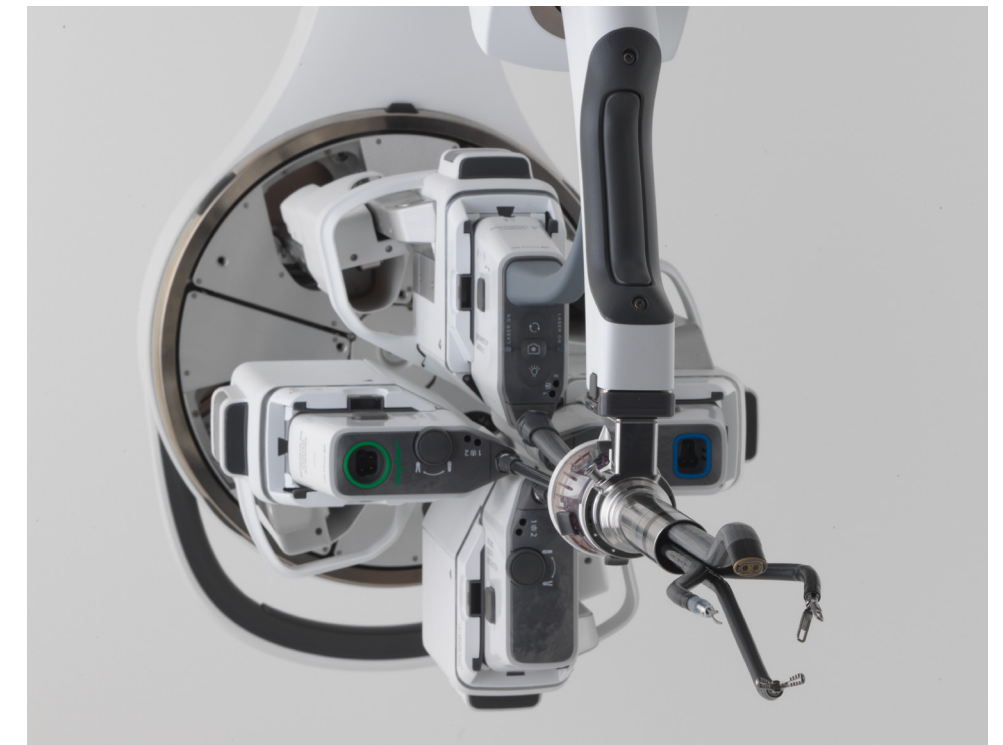
## Optimized for single-port surgery

Control three instruments and an endoscope through a single port.

Take control of instruments designed for precise suturing, dissection, and tissue manipulation.



Achieve intracorporeal triangulation with the SP instruments' elbow and wrist.



# System comparison



Core technology	Da Vinci X	Da Vinci Xi	Da Vinci SP
Intuitive motion	✓	✓	✓
EndoWrist® instrumentation	✓	✓	✓
Immersive 3DHD stereo viewer	✓	✓	✓
Upgradeable architecture	✓	✓	✓
Single-port technology	-	-	✓
<b>Technology enhancements</b>			
Dual console compatible	✓	✓	✓
SureForm® staplers	✓	✓	-
Bipolar and monopolar energy	✓	✓	✓
Advanced energy	✓	✓	-
Firefly fluorescence imaging	✓	✓	✓
8 mm endoscope (0° and 30° angles)	✓	✓	-
Articulating endoscope	-	-	✓
Energy generators	✓	✓	✓

Capability enhancements	Da Vinci X	Da Vinci Xi	Da Vinci SP
Streamlined port placement	✓	✓	✓
Extended anatomical access	-	✓	✓
Integrated table motion	-	✓	-
Boom rotation	-	✓	✓
360° axis rotation	-	-	✓
Single-port distal triangulation	-	-	✓
<b>Ease-of-use enhancements</b>			
Automated setup tasks	-	✓	✓
Advanced intraoperative adjustments	-	✓	✓
Universal cart positioning	-	✓	✓
Optimized patient side access	-	✓	✓
No external arm collisions	-	-	✓

# Service plans

Complete Care and Complete Care Plus plans are available with a customized endoscope replacement option. This helps streamline the exchange process for efficient management of endoscope returns and provides predictable repair costs.

Features	Complete Care	Complete Care Plus
Endoscope replacement	Individual endoscope at preferred price <sup>1</sup>	Unlimited endoscopes <sup>2</sup>
Parts exchange	✓	✓
Labor and travel	✓	✓
System inspections	✓	✓
Software reliability updates	✓	✓
Technical support	✓	✓
OnSite® access	✓	✓
Instruments and accessories support	✓	✓
Customer portal	✓	✓
Guaranteed response time	24 hours	24 hours
Clinical uptime guarantee	98%	98%
Expedited parts shipments	✓	✓
Labor hours (Monday–Friday)	8 a.m.–5 p.m.	8 a.m.–5 p.m.

<sup>1</sup> Purchase individual endoscopes at an exclusive preferred price.

<sup>2</sup> Add on fee for unlimited endoscope replacements for duration of contract plan.

# Purchasing information

The da Vinci SP system has three main components as standard

## 01

A vision cart supporting the latest 3DHD vision system

## 02

A unique patient-side cart

## 03

A surgeon console providing an immersive, ergonomic experience



### To contact a representative or receive additional information

Visit [www.intuitive.com](http://www.intuitive.com) or

Call Intuitive surgical customer service:

**U.S. (toll free)**  
1-877-408-3872

**Europe**  
+41-21-821-2020 or  
+800-0821-2020 (toll free)

**Corporate office**  
1-408-523-2100

### Important safety information

Serious complications may occur in any surgery, including surgery using da Vinci systems, up to and including death. Examples of serious or life-threatening complications, which may require prolonged and/or unexpected hospitalization and/or reoperation, include but are not limited to, one or more of the following: injury to tissues/organs, bleeding, infection, and internal scarring that can cause long-lasting dysfunction/pain.

Risks specific to minimally invasive surgery, including surgery using da Vinci systems, include but are not limited to, one or more of the following: temporary pain/nerve injury associated with positioning; a longer operative time, the need to convert to an open approach, or the need for additional or larger incision sites. Converting the procedure could result in a longer operative time, a longer time under anesthesia, and could lead to increased complications. Contraindications applicable to the use of conventional endoscopic instruments also apply to the use of all da Vinci instruments.

For Important Safety Information, indications for use, risks, full cautions and warnings, please also refer to [www.intuitive.com/safety](http://www.intuitive.com/safety).

Individual's outcomes may depend on a number of factors, including but not limited to patient characteristics, disease characteristics, and/or surgeon experience.

### Da Vinci SP System (TORS and URO)

The safety and effectiveness of this device for use in the performance of general laparoscopic surgery procedures have not been established. This device is only intended to be used for single port urological procedures and for transoral otolaryngology surgical procedures in the oropharynx for benign tumors and malignant tumors classified as T1 and T2 with the da Vinci EndoWrist SP Instruments and the da Vinci SP Surgical System (SP1098).

© 2022 Intuitive Surgical Operations, Inc. All rights reserved. Product and brand names/logos are trademarks or registered trademarks of Intuitive Surgical or their respective owner. See [www.intuitive.com/trademarks](http://www.intuitive.com/trademarks).



